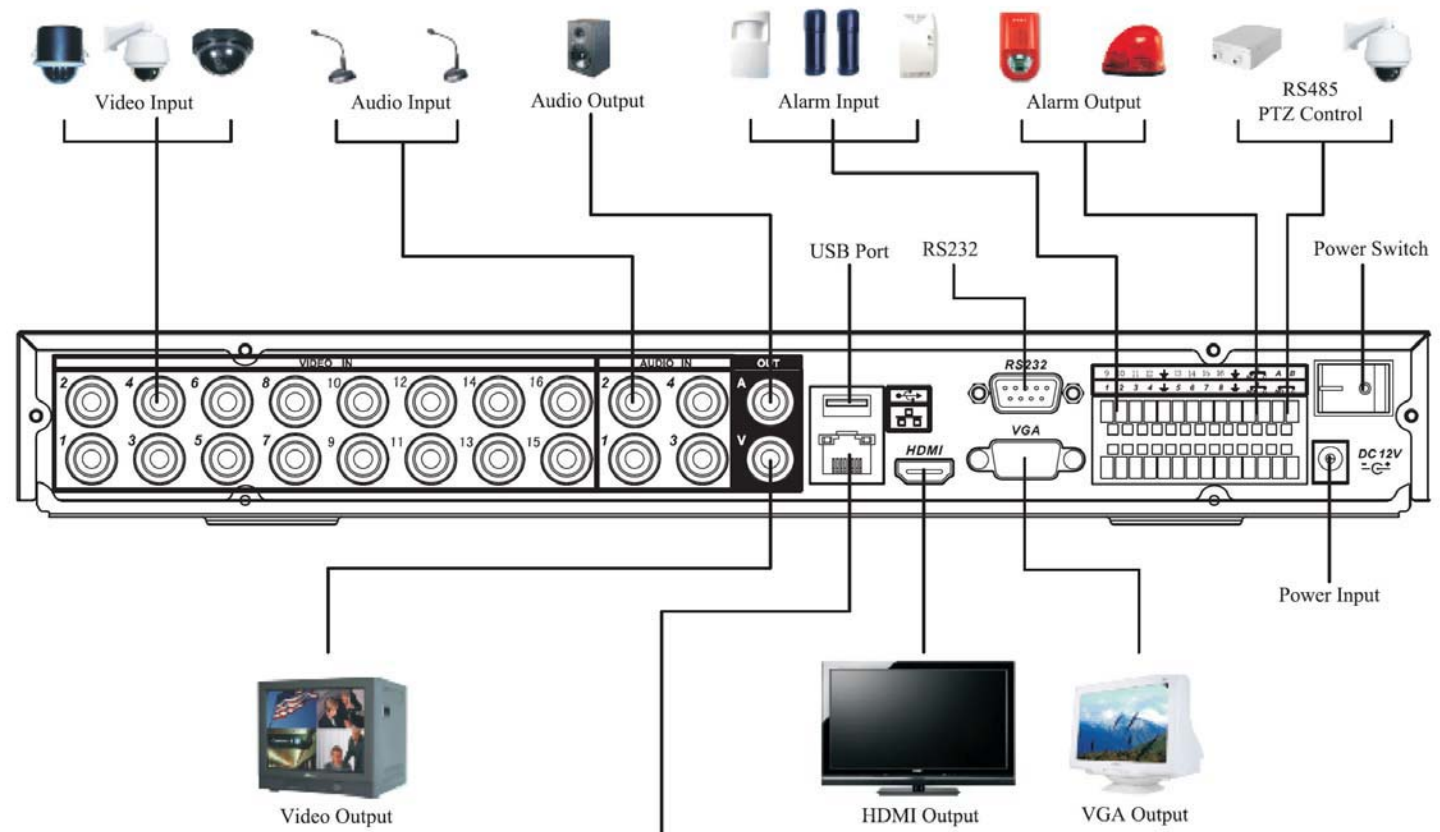


HDMI



DVR LE-A SERIES

4/8/16 Channel Entry Level Standalone DVR



Model



DVR-04LEA 4 Channel Video/Audio Digital Video Recorder / Recording: D1/6fps or CIF/25fps / each CH

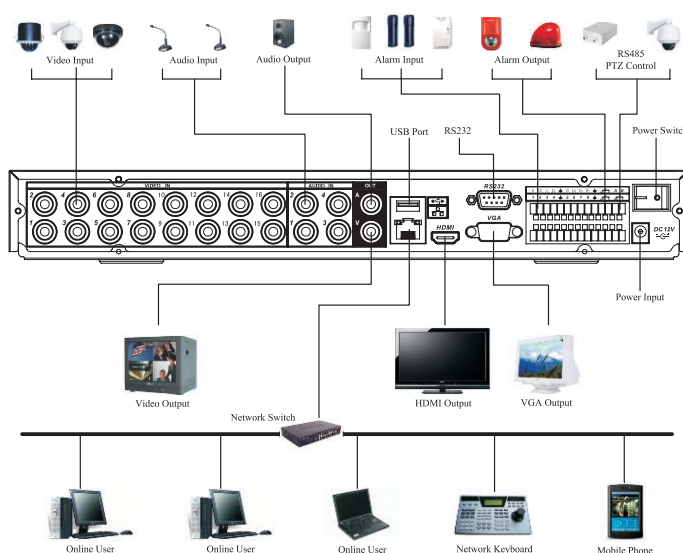
DVR-08LEA 8 Channel Video/Audio Digital Video Recorder / Recording: D1/6fps or CIF/25fps / each CH

DVR-16LEA 16 Channel Video/Audio Digital Video Recorder / Recording: D1/6fps or CIF/25fps / each CH

Features

- New standard for entry level DVR with high performance and competitive price
- H.264 compression algorithm ideal for standalone DVR
- Realtime live display up to 16 cameras with 720P high definition
- 400/480 fps recording for CIF and special channel 4CIF realtime recording.
- Dual encoding streams support, flexible for network transmission and mobile phone monitoring
- Pentaplex function: live, recording, playback, backup & remote access
- 16 channel simultaneous playback supported
- Smart video detection: motion detection, camera blank, video loss
- Smart camera settings: privacy masking, camera lock, color setting, and title display
- With Dahua Speed Dome, 3D intelligent positioning function supported
- Alarm triggering screen tips, buzzer, PTZ preset, e-mail, FTP upload
- Powerful network software: built-in web server, multi-DVR client, MSS(mobile surveillance software for smart phone) & CMS

Connection



* Take DVR0804LE-A for the example

Specifications

System	
Main Processor	High performance embedded microprocessor
Operating System	Embedded LINUX
System Resources	Pentaplex function: live, recording, playback, backup & remote access
User Interface	GUI, on-screen menu tips
Control Device	Front panel, USB mouse, DAHUA keyboard, IR remote control, network keyboard
Input Method	Numerical/Character/Denotation
System Status	HDD status, data stream statistics, log record, bios version, on-line user etc.

Video			
Video Input	4/8/16 channel, BNC, 1.0Vp-p, 75 Ω		
Video Output	1 channel TV output, BNC, 1.0Vp-p, 75 Ω, 1 VGA output, 1 HDMI output		
Video Standards	PAL(625Line, 50f/s), NTSC(525Line, 60f/s)		
Video Compression	H.264		
Video Resolution	Format	NTSC	PAL
	D1(4CIF)	704 X 480	704 X 576
	CIF	352 X 240	352 X 288
	QCIF	176 X 120	176 X 144
Video Recording	CIF/QCIF: PAL 1f/s~25f/s, NTSC 1f/s~30f/s; 4CIF: PAL 1f/s~25f/s NTSC 1f/s~30f/s; (1st channel of DVR0404LE-A, 1st channel of DVR0804LE-A, 1st and 9th channel of DV1604LE-A can support D1 realtime recording) Dual encoding streams supported;		
Video Display Split	Full and multiple screen display, 1 / 4 / 9 / 16		
Tour Display	Support		
Image Quality	1~6 level(level 6 is the best)		
Privacy Masking	4 self-defined four-sided zones for privacy masking for each camera		
Camera Lock	Camera locked for users		
Camera Adjustment	Adjust color according to different time period		
Video Information	Camera title, time, video loss, camera lock, motion detection, recording		
TV Output Adjustment	Adjust TV output color & display zone		

Audio	
Audio Input	4/8/4 channel, BNC, 200~2800mV, 30K Ω
Bidirectional Talk Input	1 channel, BNC, 200~2800mV, 30K Ω, same with the 1st channel
Audio Output	1 channel, BNC, 200~3000mv, 5K Ω
Audio Compression	G.711

Video Detection & Alarm	
Motion Detection	Zones: 396 (22*18) detection zones Sensitivity: 1~6 (level 6 is highest) Trigger recording, PTZ movement, tour, alarm, email
Video Loss	Trigger recording, PTZ movement, tour, alarm, email

Camera Blank	Trigger recording, PTZ movement, tour, alarm, email
Alarm Input	4/8/16 channel, programmable, ground, manual open/closed Trigger recording, PTZ movement, tour, alarm, email
Relay Output	3/3/3 channel, 30VDC, 1A, NO/NC, form-C

Hard Disk	
Hard Disk	1 SATA port, 1 HDD supported
Space Occupation	Audio: 14.4MB/H Video: 56 ~ 500MB/H
HDD Management	Hard disk hibernation technology, HDD faulty alarm

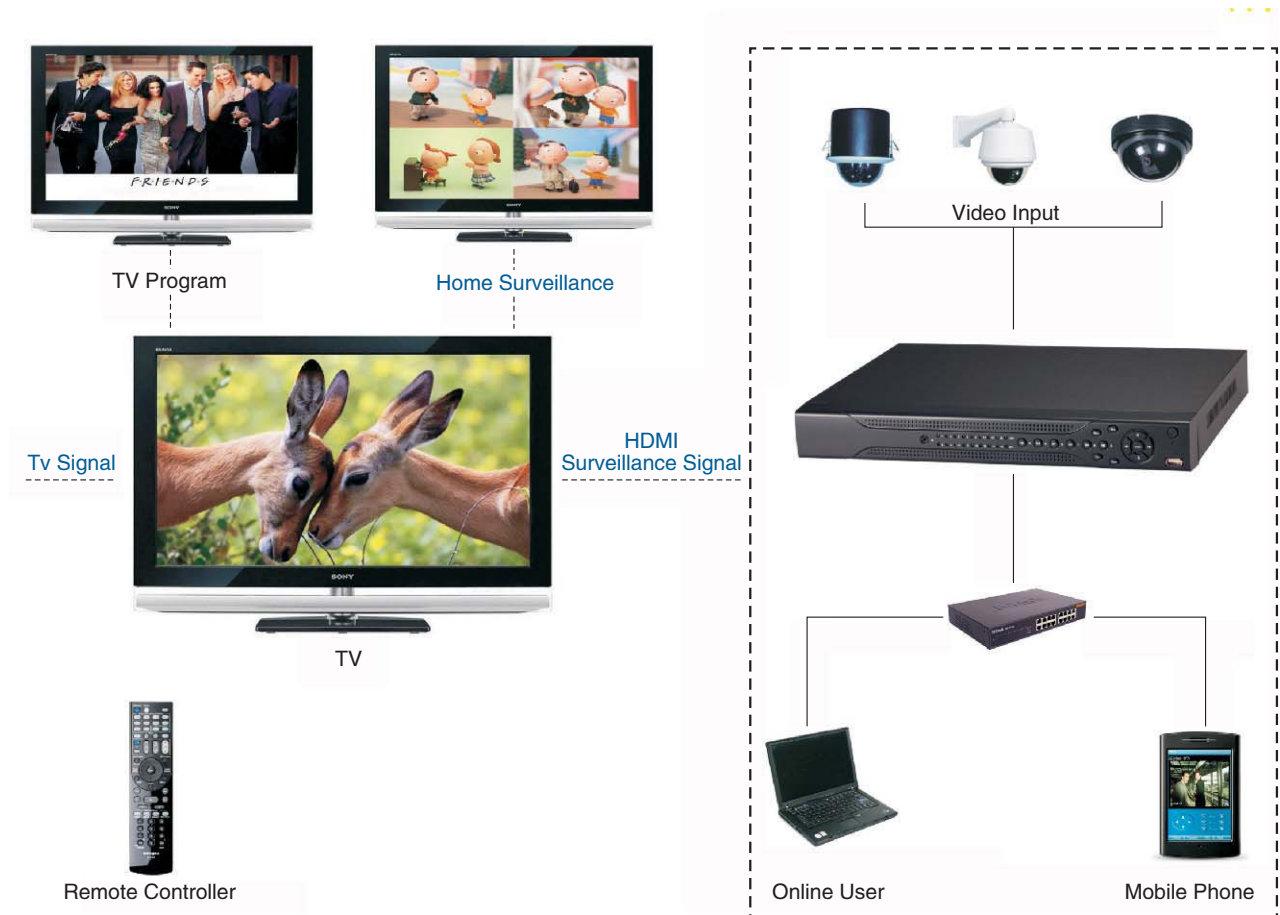
Record, Playback & Backup	
Recording Mode	Manual, continuous, video detection (including motion detection, camera blank, video loss), Alarm
Recording Priority	Manual >Alarm >Video Detection >Continuous
Recording Interval	1 to 120 minutes (default: 60 minutes), Pre-record up to 30 seconds, Post-record up to 5 minutes
Overwrite Mode	Support
Search Mode	Time/Date, Alarm, Motion Detection & exact search (accurate to second)
Playback	16 channel playback simultaneously, pause, stop, rewind, fast play, slow play, next file, previous file, next camera, previous camera, full screen, repeat, shuffle, backup selection
Digital Zoom	Selected zone can zoom into full screen during playback
Backup Mode	Flash disk/ USB HDD/ USB CD/DVD-RW/ Network download

Network	
Interface	RJ-45 Port (10/100M)
Network Functions	TCP/IP, UDP, DHCP, DNS, IP Filter, PPPOE, DDNS, FTP, Email, Alarm Server
Remote Operation	Monitor, PTZ control, playback, system setting, file download, log information

Auxiliary Interface	
USB Interface	2 ports, 1 for mouse control, 1 for backup
RS232	DAHUA keyboard, PC communication
RS485	PTZ control

Environmental	
Power Supply	220V 50Hz / 110V 60Hz
Power Consumption	25W
Working Temperature	-10℃~+55℃
Working Humidity	10%~90%
Atmosphere Pressure	86kpa~106kpa
Dimension	1U, 375mmx285mmx45mm (W*D*H)
Weight	2.35KG(without HDD)
Mounting	Desktop or rack

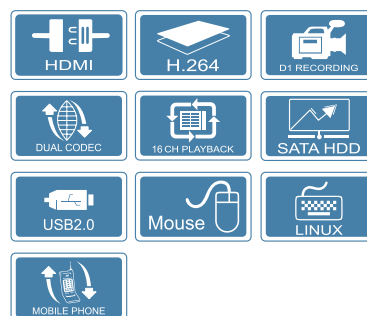
Home Application



Through the remote controller, you can select different video sources: TV or HMDI input.
You can get HD image from TV and CCTV system. See what you want and control what your want.

DVR LE-S SERIES

4/8/16 Channel LE-S Series Standalone DVR



Model

DVR-04LES 4 Channel Video / Audio / Matrix / Loop model/ Recording: D1/6fps or CIF/25fps / each CH

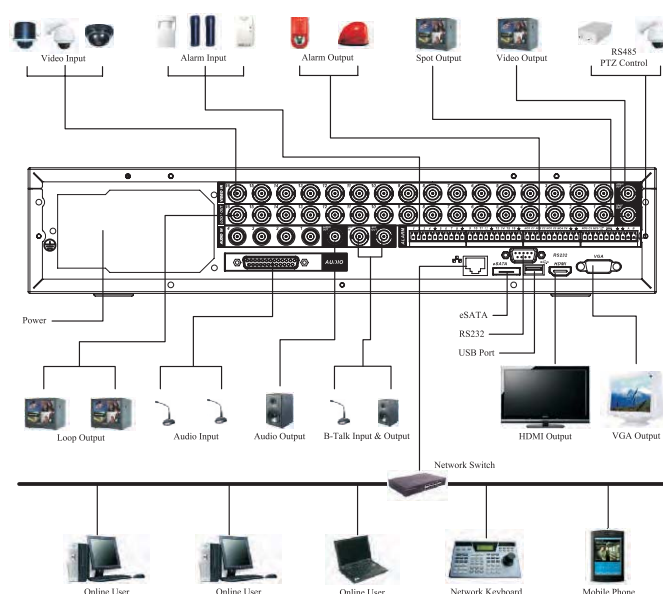
DVR-08LES 8 Channel Video / Audio / Matrix / Loop model/ Recording: D1/6fps or CIF/25fps / each CH

DVR-16LES 16 Channel Video / Audio / Matrix / Loop model/ Recording: D1/6fps or CIF/25fps / each CH

Features

- New 2U standalone DVR with high performance and competitive price
- H.264 compression algorithm ideal for standalone DVR
Realtime live display up to 16 cameras with 720P high definition
- 400/480 fps recording for CIF and special channel 4CIF realtime recording.
- Dual encoding streams support, flexible for network transmission and mobile phone monitoring
- Pentaplex function: live, recording, playback, backup & remote access
- 4 HDDs supported, eSATA port & CD-RW/DVD-RW supported
- 16 channel simultaneous playback supported
- Smart video detection: motion detection, camera blank, video loss
- Smart camera settings: privacy masking, camera lock, color setting, and title display
- With Dahua Speed Dome, 3D intelligent positioning function supported
- Alarm triggering screen tips, buzzer, PTZ preset, e-mail, FTP upload
- Powerful network software: built-in web server, multi-DVR client, MSS(mobile surveillance software for smart phone) & CMS

Connection



* Take DVR1604LE-S for the example

Specifications

System	
Main Processor	High performance embedded microprocessor
Operating System	Embedded LINUX
System Resources	Pentaplex function: live, recording, playback, backup & remote access
User Interface	GUI, on-screen menu tips
Control Device	Front panel, USB mouse, DAHUA keyboard, IR remote control, network keyboard
Input Method	Numeral/Character/Denotation
System Status	HDD status, data stream statistics, log record, bios version, on-line user etc.

Video			
Video Input	4/8/16 channel, BNC, 1.0Vp-p, 75Ω , looping		
Video Output	1 channel TV output, BNC, 1.0Vp-p, 75Ω , 1 VGA output, 1 HDMI output		
Video Standards	PAL(625Line, 50f/s), NTSC(525Line, 60f/s)		
Video Compression	H.264		
Video Resolution	Format	NTSC	PAL
	D1(4CIF)	704 X 480	704 X 576
	CIF	352 X 240	352 X 288
	QCIF	176 X 120	176 X 144
Video Recording	CIF/QCIF: PAL 1f/s~25f/s, NTSC 1f/s~30f/s; 4CIF: PAL 1f/s~25f/s NTSC 1f/s~30f/s; (1st channel of DVR0404LE-S, 1st channel of DVR0804LE-S, 1st and 9th channel of DV1604LE-S can support D1 realtime recording) Dual encoding streams supported;		
Video Display Split	Full and multiple screen display, 1 / 4 / 9 / 16		
Tour Display	Support		
Image Quality	1~6 level(level 6 is the best)		
Privacy Masking	4 self-defined four-sided zones for privacy masking for each camera		
Camera Lock	Camera locked for users		
Camera Adjustment	Adjust color according to different time period		
Video Information	Camera title, time, video loss, camera lock, motion detection, recording		
TV Output Adjustment	Adjust TV output color & display zone		

Audio	
Audio Input	4/8/16 channel, BNC, 200~2800mV, 30K Ω
Bidirectional Talk Input	1 channel, BNC, 200~2800mV, 30K Ω
Audio Output	1 channel, BNC, 200~3000mv, 5K Ω
Audio Compression	G.711

Video Detection & Alarm	
Motion Detection	Zones: 396 (22*18) detection zones Sensitivity: 1~6 (level 6 is highest) Trigger recording, PTZ movement, tour, alarm, email, matrix output
Video Loss	Trigger recording, PTZ movement, tour, alarm, email, matrix output
Camera Blank	Trigger recording, PTZ movement, tour, alarm, email, matrix output

Alarm Input	16/16/16 channel, programmable, ground, manual open/closed Trigger recording, PTZ movement, tour, alarm, email, matrix output
Relay Output	6/6/6 channel, 30VDC, 1A, NO/NC, form-C

Hard Disk	
Hard Disk	4 SATA ports, 4 HDDs supported, eSATA port
Space Occupation	Audio: 14.4MB/H Video: 56 ~ 500MB/H
HDD Management	Hard disk hibernation technology, HDD faulty alarm & Raid(Redundancy)

Record, Playback & Backup	
Recording Mode	Manual, continuous, video detection (including motion detection, camera blank, video loss), Alarm
Recording Priority	Manual >Alarm >Video Detection >Continuous
Recording Interval	1 to 120 minutes (default: 60 minutes), Pre-record up to 30 seconds, Post-record up to 5 minutes
Overwrite Mode	Support
Search Mode	Time/Date, Alarm, Motion Detection & exact search (accurate to second)
Playback	16 channel playback simultaneously, pause, stop, rewind, fast play, slow play, next file, previous file, next camera, previous camera, full screen, repeat, shuffle, backup selection(future version will support 16 channel playback)
Digital Zoom	Selected zone can zoom into full screen during playback
Backup Mode	Flash disk/ USB HDD/ USB CD/DVD-RW/ built-in SATA burner/ Network download

Network	
Interface	RJ-45 Port (10/100M)
Network Functions	TCP/IP, UDP, DHCP, DNS, IP Filter, PPPOE, DDNS, FTP, Email, Alarm Server
Remote Operation	Monitor, PTZ control, playback, system setting, file download, log information

Auxiliary Interface	
USB Interface	2 ports, 1 for mouse control, 1 for backup
RS232	DAHUA keyboard, PC communication
RS485	PTZ control

Environmental	
Power Supply	220V 50Hz / 110V 60Hz
Power Consumption	25W/30W/40W
Working Temperature	-10°C~+55°C
Working Humidity	10%~90%
Atmosphere Pressure	86kpa~106kpa
Dimension	1.5U, 440mmx460mmx89mm (W*D*H)
Weight	6.5KG(without HDD)
Mounting	Desktop or rack



Model

DH-PSS Pro Surveillance System

Features

- Register up to 1000 channels connection and 36 live viewing at 1 screen.
- Support DVR, video server, IP camera, decoders and other network products connection.
- PTZ, bidirectional talk, camera settings, color adjustment
- Support device management, configuration, reboot and other operation
- Support decoders to realize the virtual matrix system and video wall.
- Support alarm of different types: external, motion detection, video loss, camera masking.
- Support video monitoring project, layout configuration, recording plan
- Health report can provide the device status and other information.
- Video search can be from the local PC, device itself and from other storage center.
- Used for the central monitoring system

Specifications

Device to Use	
Supported Devices	DVR, video server, IP cameras, decoders and etc.
Max Register Device	1000 channels.
Device Management	Add, delete, reboot, configuration, bidirectional talk.
Health Report	Device status, alarm info.

Live Monitoring	
Video Display Split	Full screen and 1 / 4 / 9 / 13 / 16 / 25 /36
Launches Instant Play	DVR, video server, IP camera
PTZ Control	Directions, Pan, Tilt, Zoom, Focus, Iris, Preset, Tour, Pattern
Snapshot	Supported
Local Record	Supported
Video Information	Camera title, time, video loss

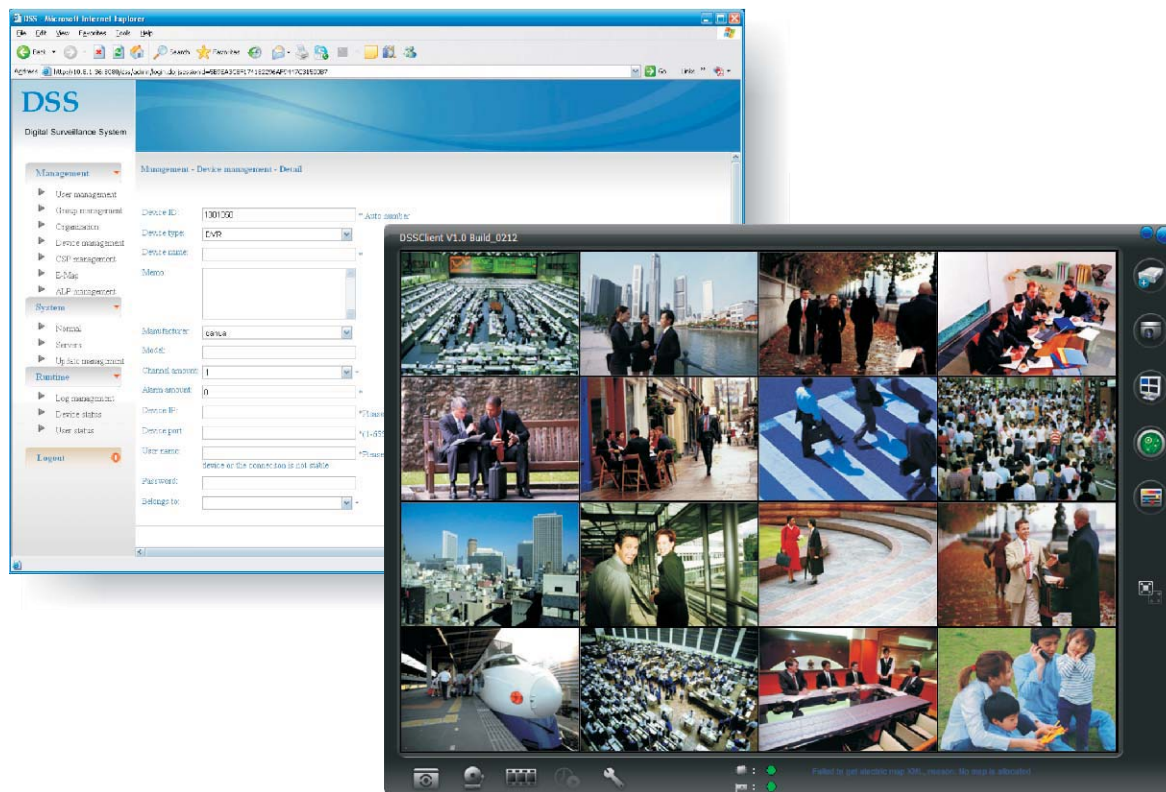
Playback	
Video Source	Local PC, device itself, storage server
Search Type	Certain time, timing, motion detection, alarm, card
Digital Zoom	Supported
Snapshot	Supported

Alarm Signal Monitoring	
Alarm Type	External alarm, video loss, motion detection, camera masking, others
Play Warning Sound or Message	Supported
Camera Blank	Trigger recording, PTZ movement, tour, alarm
Set Up	A certain period of time of a day, a certain types of alarms, Automated notifications to user, Schedules actions against alarms

MAP	
Number of Maps	Map group : Unlimited, Sub-Map, Layout : 64
Supports Image	JPEG / BMP

System Requirement	
CPU	Intel Core2Duo E6750, RAM : 2GB above
Video Memory	512MB
HDD	80GB above
OS	Window XP/Vista, DirectX 9.0 above
Display Resolution	1024 x 768 above

DSS

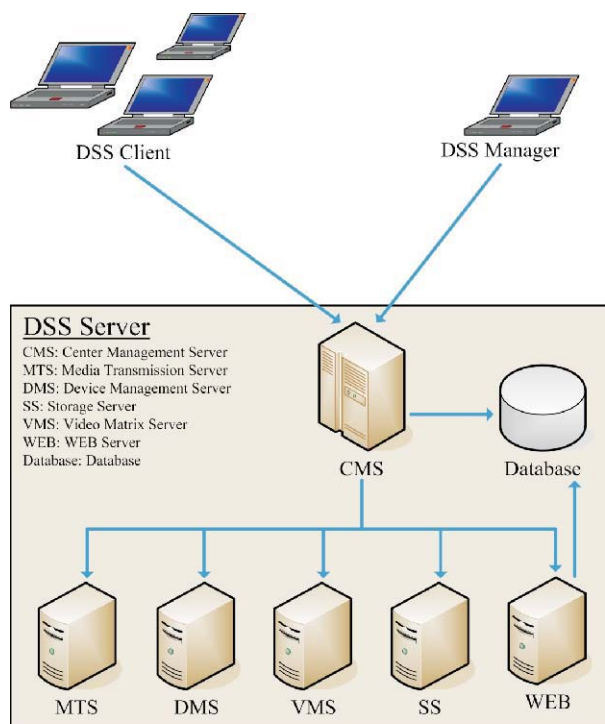


Model

DH-DSS Digital Surveillance System

Features

- DSS is used for large-scale and mission critical applications.
- The central management and intuitive access clients make it easy to install, use and manage.
- Distributed architecture supports unlimited sites, servers and users.
- High stability and reliability: load balancing, dynamic cluster, hot standby and watchdog technology.
- Remote management, monitoring, playback, download, central storage.
- Multiple screens display E-map, monitoring windows, alarm alerts in different sites.
- PTZ, bidirectional talk, camera settings, color adjustment and other setting.
- Support DVR, video server, IP camera and other network products connection.
- Application client and web client can be used for different users.



Specifications

Device to Use	
Supported Devices	DVR, video server, IP cameras, decoders and etc.
Max Register Device	Support 1000 channels.
Device Management	Add, delete, reboot, configuration, bidirectional talk.
Health Report	Device status, alarm info.

Central Management(DSS Server)	
User Management	2 type: administrator and operator
Device Management	Add, delete and modify the device
E-map	Add, delete and modify the map and device
Server	CMS, MTS, DMS, SS, VMS
Status	Log record, device status, user status

Live Monitoring(DSS Client)	
Video Display Split	Full screen and 1 / 4 / 9 / 13 / 16 / 25 /36
Launches Instant Play	DVR, video server, IP camera
PTZ Control	Directions, Pan, Tilt, Zoom, Focus, Iris, Preset, Tour, Pattern
Snapshot	Supported
Local Record	Supported
Video Information	Camera title, time, video loss

Playback	
Video Source	Local PC, device itself, storage server
Search Type	Certain time, timing, motion detection, alarm, card
Digital Zoom	Supported
Snapshot	Supported

Alarm Signal Monitoring	
Alarm Type	External alarm, video loss, motion detection, camera masking, others
Play Warning Sound or Message	Supported
Camera Blank	Trigger recording, PTZ movement, tour, alarm
Set Up	A certain period of time of a day, a certain types of alarms, Automated notifications to user, Schedules actions against alarms

MAP	
Number of Maps	Map group : Unlimited, Sub-Map, Layout : 64
Supports Image	JPEG / BMP

System Requirement	
CPU	Intel Core2Duo E6750, RAM : 2GB above
Video Memory	512MB
HDD	80GB above
OS	Window XP/Vista, DirectX 9.0 above
Display Resolution	1024 x 768 above